

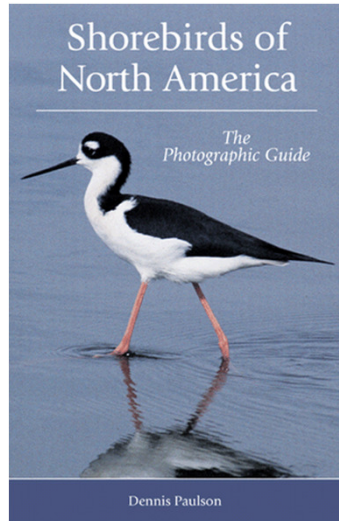
Pacific Flyway Shorebird Survey

Shorebird Identification

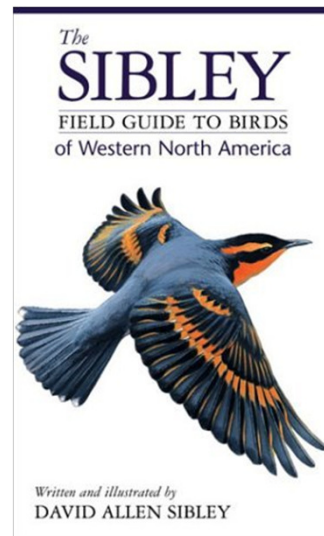


Field Guides

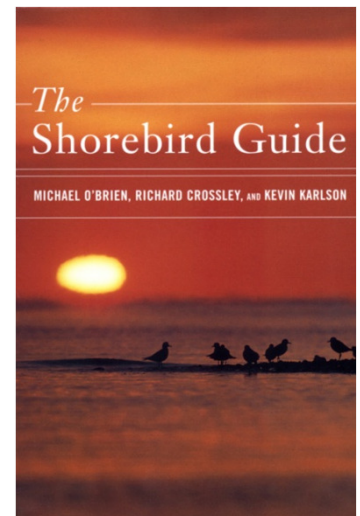
*Shorebirds of North America:
The Photographic Guide*
by Dennis Paulson



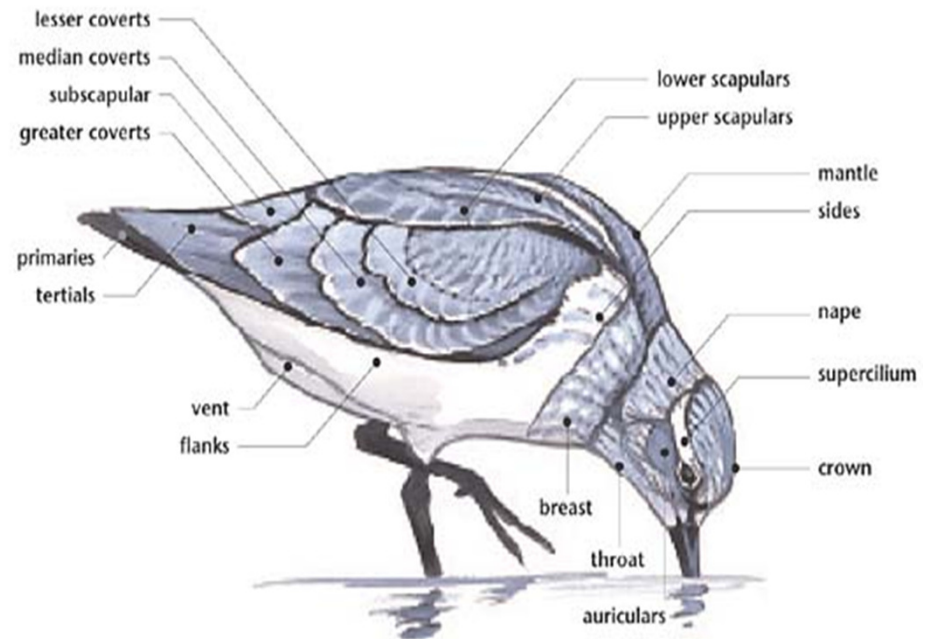
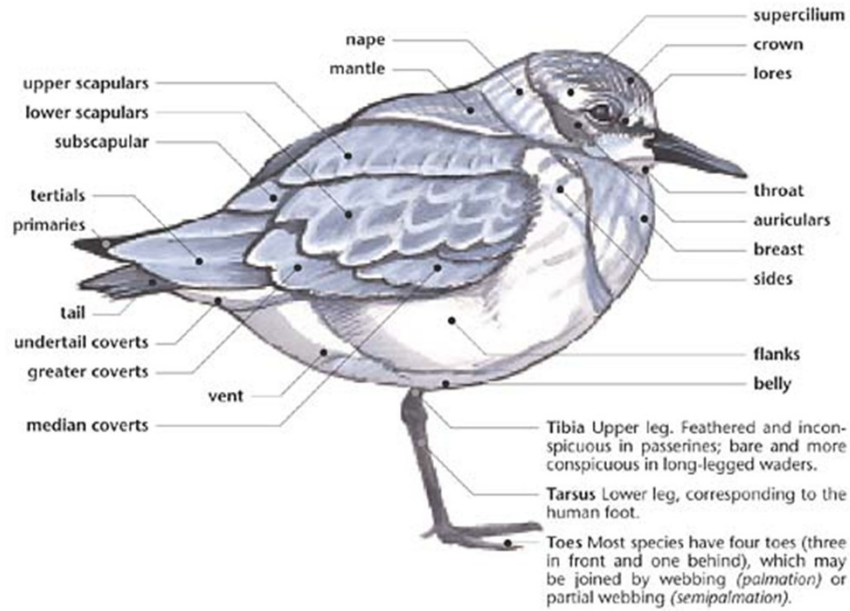
*The Sibley Field Guide to the Birds
of Western North America*
by David Allen Sibley



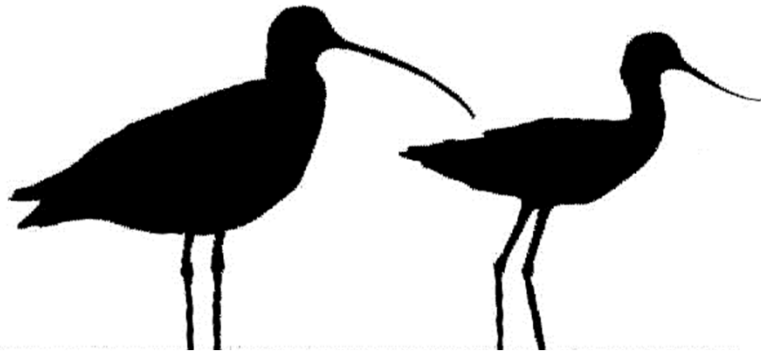
The Shorebird Guide
by Michael O'Brien,
Richard Crossley,
Kevin Karlson



Shorebird Topography



Shorebird Silhouettes



curlews

avocets



plovers

Dowitchers



yellowlegs



oystercatchers



dunlin



peeps

Large Shorebirds

Marbled Godwit (*Limosa fedoa*)



Long-billed Curlew
(*Numenius americanus*)



Whimbrel
(*Numenius phaeopus*)



Marbled Godwit

Size: Large, L: 16”

Legs: Long, dark

Bill: Very long, bi-colored, slightly **recurved**

Appearance:

- Mottled upperparts
- Pale-buff underparts
- Cinnamon wing linings



Long-billed Curlew

Size: Largest North American shorebird, L:19”

Legs: Gray

Bill: Very long and decurved

Appearance:

- Mottled brown upperparts
- Cinnamon underparts
- Long neck, small head
- **Cinnamon underwing**



Whimbrel

Size: Large, L: 14”

Bill: Long and decurved

Legs: Dark and short

Appearance:

- Brown upperparts with light and dark spotting
- **Head striped** brown and white
- Brown streaked neck and breast
- White belly



Long-billed Curlew vs. Whimbrel



Long-billed Curlew

*larger

**longer* bill

*lighter legs



Whimbrel

*smaller

**shorter* bill

*darker legs

*striped head

Stilts and Avocets

Black-necked Stilt
(*Himantopus mexicanus*)



© Andrew Reitsma



© WildNatureImages.com

American Avocet
(*Recurvirostra americana*)



Plovers

Killdeer
(*Charadrius vociferous*)



Semipalmated Plover
(*Charadrius semipalmatus*)



Snowy Plover
(*Charadrius alexandrinus*)



Black-bellied Plover
(*Pluvialis squatarola*)



Killdeer

Size: Medium, L: 8”

Bill: Short, thick, dark

Legs: Flesh-colored

Appearance:

- Upperparts brown
- Underparts white
- **Two black breast bands**
- Red eye ring



© Ingrid Taylor



Stuart McKay

Semipalmated Plover



Size: Small, L: 5.75”

Bill: Short, thin, **bi-colored**

Legs: **Orange to yellow**

Appearance:

- Upperparts brownish-grey
- Underparts white
- **single black neck band**



Black-bellied Plover

Size: Medium, **plump**, L: 9.5”

Bill: Short, **thick**, dark

Legs: Black

Appearance:

- Gray upperparts with pale edging
- White underparts
- **Black axillaries** visible in flight
- White wing stripe, white rump

Voice: slow “*peeooEEE*”



Snowy Plover

Size: small, L: 6.25”

Bill: Short, thin, dark

Legs: Grey

Appearance:

- pale upperparts
- White underparts
- Broken breastband
- Dark forecrown



Arthur Morris/BIRDS AS ART

Medium Shorebirds

Yellowlegs (*Tringa spp.*)



Dowitchers (*Limnodromus spp.*)



Willet (*Catoptrophorus semipalmatus*)



Willet



Photo by H. R. Spendelow Jr.



ww.aves.ne

Size: L:13.5”

Legs: Blue-gray

Bill: long, thick, straight, black or blue-gray with darker tip

Appearance:

- Uniformly gray appearance
- White underparts
- Plump-looking, long-legged
- **Bold black and white wing pattern in flight**

Greater and Lesser Yellowlegs



Greater Yellowlegs

Size: Medium, L: 14"

Bill: slightly upturned, longer bill

Voice: "tew, tew, tew"



Lesser Yellowlegs

Size: Medium, L: 10.5"

Bill: straighter, shorter bill

Voice: "too-too"

Legs: Bright yellow

Appearance:

- Underparts white with gray-brown streaks
- Upperparts dark brown with pale flecks

Long- and short-billed Dowitchers

Size: Medium, L: 10”

Bill: Long, straight

Legs: Dull, yellowish

Appearance:

- Upperparts gray
- Breast pale gray with faint spotting; belly white
- White wedge on back in flight
- Tail barred black and white

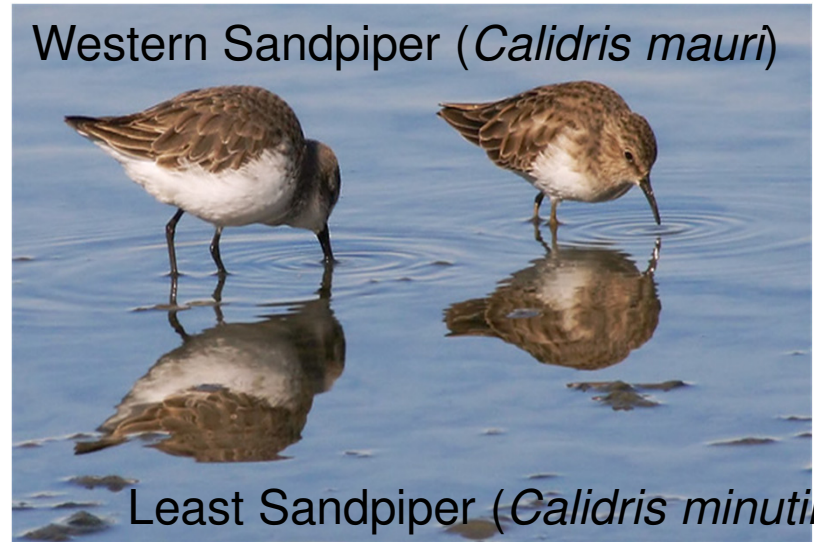


Small Sandpipers

Dunlin (*Calidris alpina*)



Western Sandpiper (*Calidris mauri*)



Least Sandpiper (*Calidris minutilla*)

Sanderling (*Calidris alba*)



Photo by Ben Pless

Red Knot (*Calidris canutus*)



© Scott Streit, 2000

Dunlin



Size: Small, L: 7"

Bill: Medium, thin, dark; **drooping**

Legs: Black legs

Appearance:

- Gray upperparts
- Pale indistinct supercilium
- Faintly spotted gray breast
- White belly
- Black patch on rump extending onto tail



Dunlin
Ishikawa Pref. Japan
11 Sep. 2004 (C)N.K.

Breeding remnant



<http://homepage2.nifty.com>
Dunlin
Osaka Pref. Japan 2 May 2004 (C)N.K.

Sanderling

Size: Small, L: 6.5”

Bill: medium, thin, dark

Legs: Black legs

Appearance:

- Wide, white wing stripe
- Black line on rump extends to tail
- Pale gray upperparts
- Faint, partial gray breast band
- White underparts
- Indistinct white supercilium and dark eye line
- Wave chasers



Red Knot

Size: 9-9.8 “

Bill: short, straight, black

Legs: stout, olive-yellow

Appearance:

- largest peep
- light brown/grey upperparts
- whitish underparts
- barring on the flanks
- pale grey rump and tail



Western Sandpiper



Size: small, L: 5.25”

Bill: short, thin, dark; thinner at tip than at base, slightly drooping

Legs: Dark

Appearance:

- Grayish upperparts
- White underparts
- Faint, partial gray breast band
- Indistinct white supercilium, gray crown and cheeks
- Rufous scapulars in juveniles



Least Sandpiper

Size: World's smallest shorebird, L: 4.75"

Bill: Short, thin, dark; slightly decurved

Legs: Yellowish

Appearance:

- Brownish-gray upperparts
- White underparts
- Gray-brown breast band
- Indistinct white supercilium with darker crown and eyeline



Western vs. Least Sandpipers



Western Sandpiper



Least Sandpiper



Which are these?

- The two common small shorebirds called "peeps" in most of the West.
- **Western Sandpiper** has **black** legs, longer bill, droops slightly at tip. In winter, gray or gray-brown; perhaps the palest "peep."
- **Least Sandpiper** has **yellowish** legs (unless stained by mud), has a shorter bill and is browner.

Rocky-intertidal Shorebirds

Black Turnstone
(*Arenaria melanocephala*)



Ruddy Turnstone
(*Arenaria interpres*)



Black Oystercatcher
(*Haematopus bachmani*)



Spotted Sandpiper
(*Actitis macularia*)

