

Mammal Identification Reference

2021 – Fall Semester

While using Wildlife Insights this semester, you will be tasked with identification of several different species of mammals commonly found throughout the Wasatch front. To help in this identification process, reference images and defining characteristics for these species have been included. Please be sure you are 100% positive in any identification you make in Wildlife Insights, as there is no secondary opinion for identification after submission. Please leave an image blank and unidentified over making a guess.

If you have any questions about identification, or need help identifying an image, feel free to email your TA Emily Young (emilyjyoungsojo@gmail.com) or the project lead, Austin Green (austin.m.green2015@gmail.com).

Common Species:

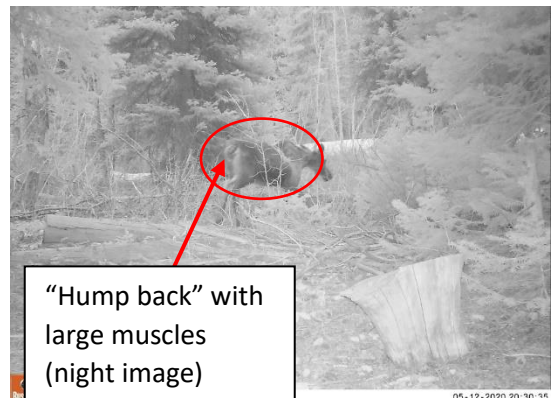
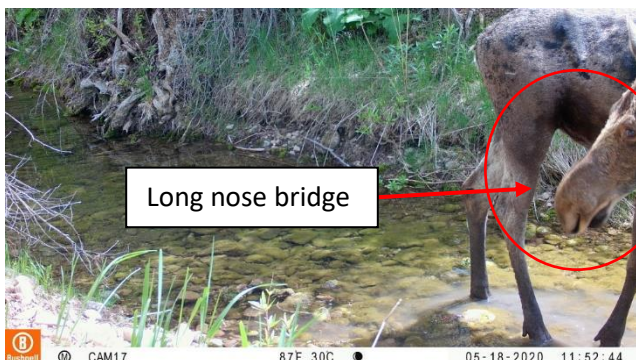
- Moose (1)
- Coyote (2-3)
- Elk aka Red Deer (3-4)
- North American Porcupine (4)
- Red Squirrel (11-12)
- Northern Flying Squirrel (5)
- Snowshoe Hare (5-6)
- Bobcat (6-7)
- Mule Deer (7-8)
- Fox Squirrel (12-13)
- Rock Squirrel (8)
- Northern Raccoon (9)
- Striped Skunk (9-10)
- Puma (10-11)
- Red Fox (13-14)

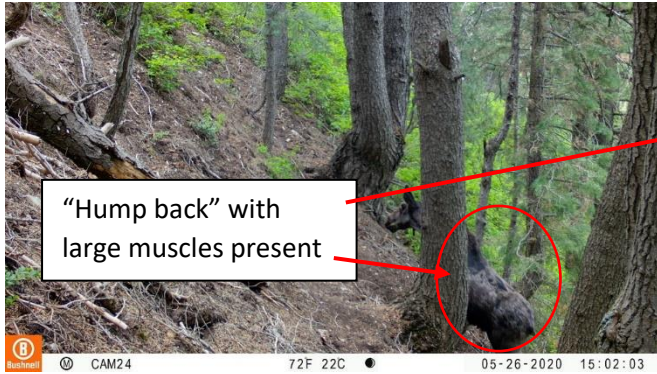
*Page number = ()

Moose

Defining characteristics:

- Long nose with small ear flaps and large nose
- Dew flap
- Males exhibit large flat antlers
- “Hump back” appearance on upper back due to large muscles



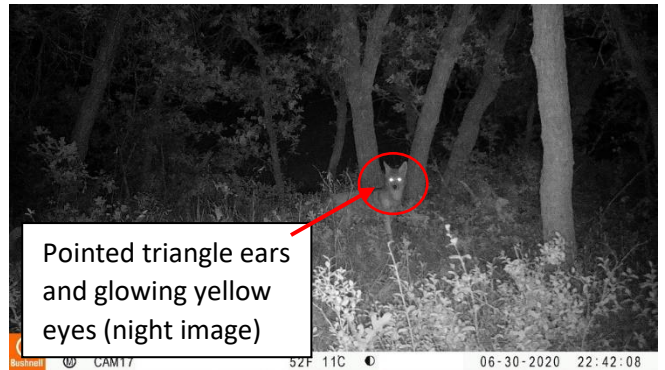
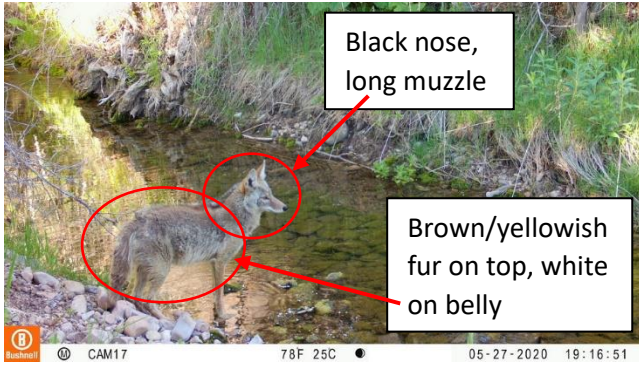


Coyote

Defining characteristics:

- Long and thin/narrow muzzle
- Triangle ears
- Black nose with yellow eyes
- Long furry tail
- Darker fur coloring (greyish brown to yellow brown) on back and white/lighter coloring

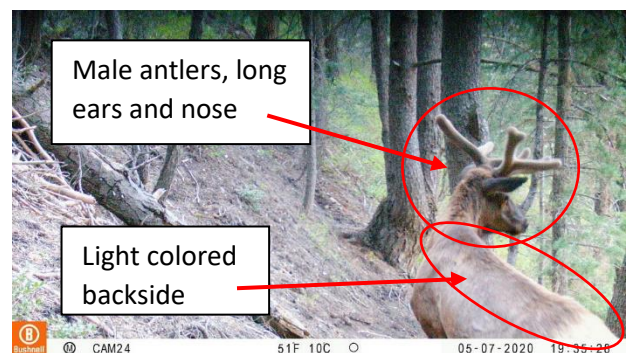
on belly



Elk aka Red Deer

Defining characteristics:

- Long skinny legs with dark hair
- Back and sides have the lightest colored hair on the body
- Long head and large ears
- Adult males will have large branching antlers which may look fuzzy





North American Porcupine

Defining characteristics:

- Black-brownish yellow fur
- Short legs
- Round body, short head, short ears
- Spined body



Northern Flying Squirrel

Defining characteristics:

- Large eyes
- Long limbs and body
- Flat, long, bushy tail

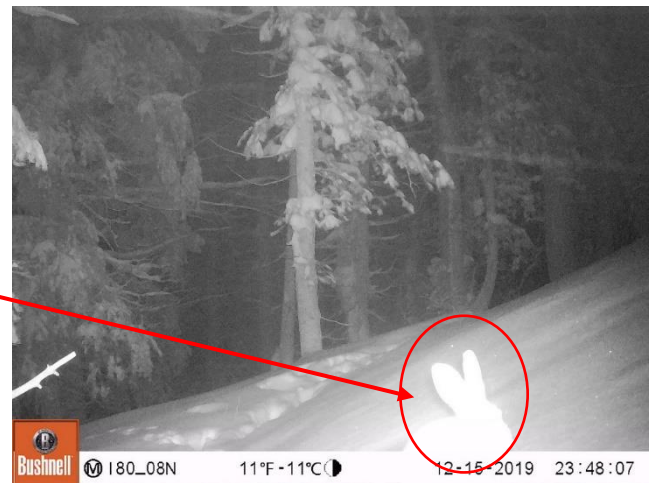
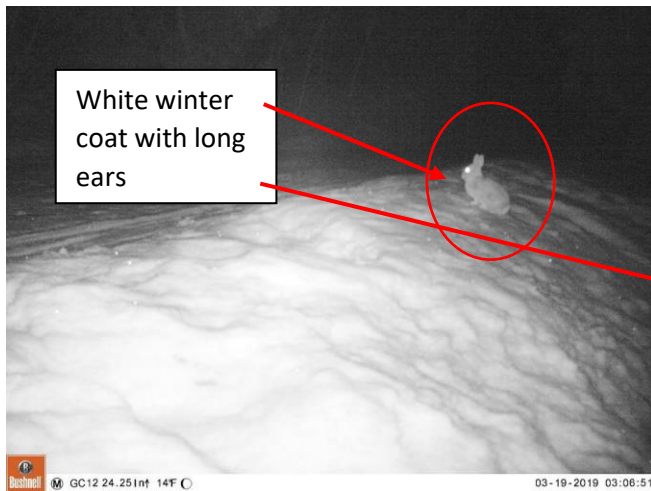
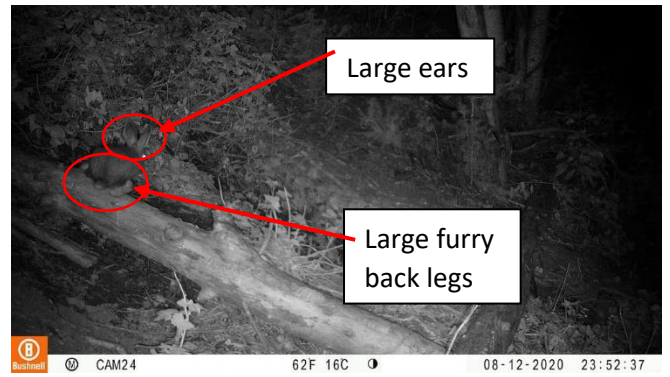


Snowshoe Hare

Defining characteristics:

- Large fur covered hind feet
- Seasonal coat color change – white in winter or brown in summer

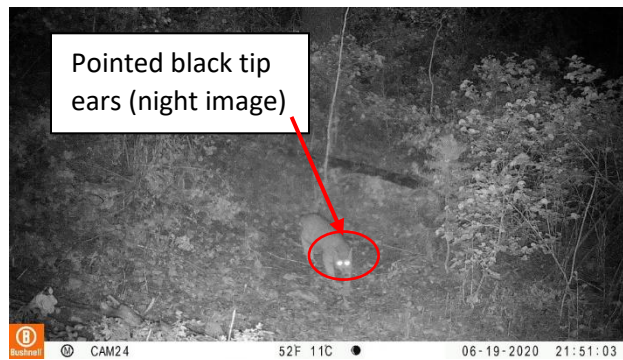
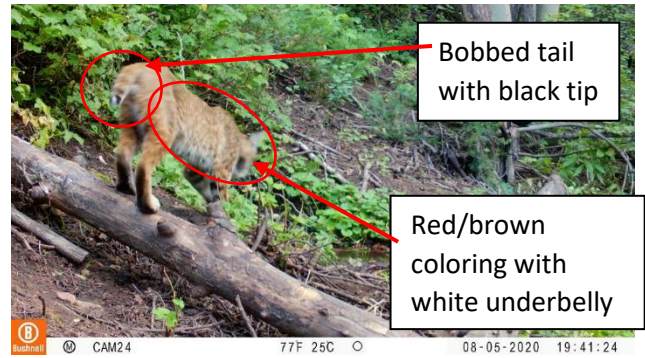
- Black tipped ears



Bobcat

Defining characteristics:

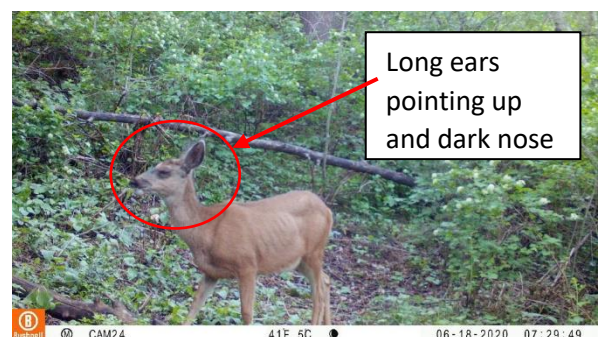
- Black tufted ears (tuft of hair protruding from ear's tip)
- Black tipped tail with a "bobbed" or cut appearance (short and stubby-ish)
- Long legs and large feet
- Coloring is brown or red-ish with a white underbelly

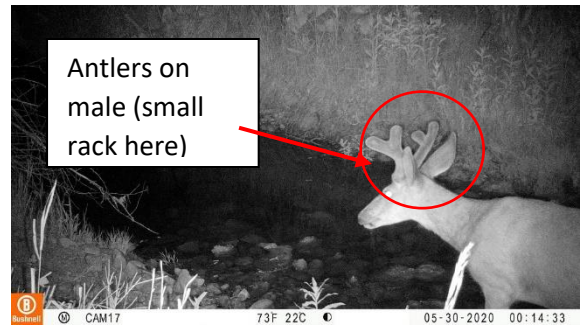


Mule Deer

Defining characteristics:

- Dark forehead and light grey or white face
- Tanish-brown coat color in winter
- Large/long ears
- Antlers on males
- Dark nose
- Short tail with black tip

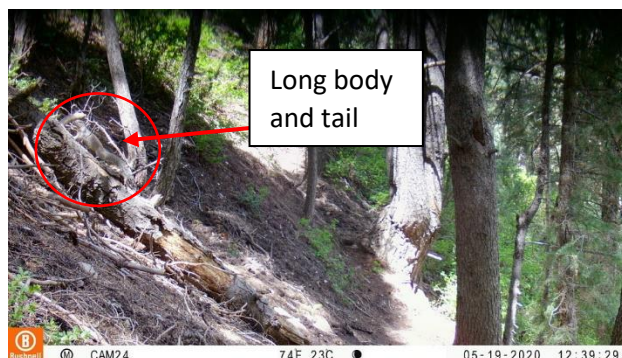
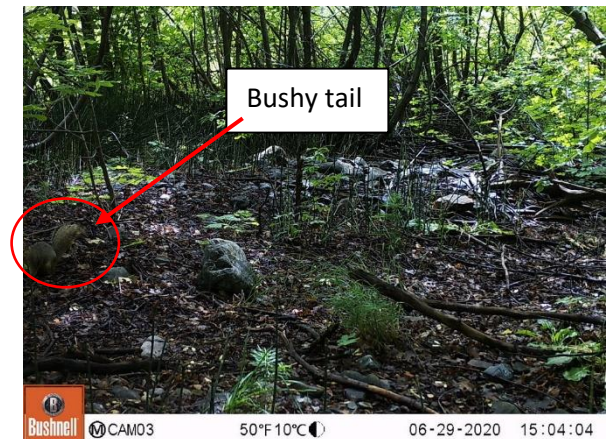




Rock Squirrel

Defining characteristics:

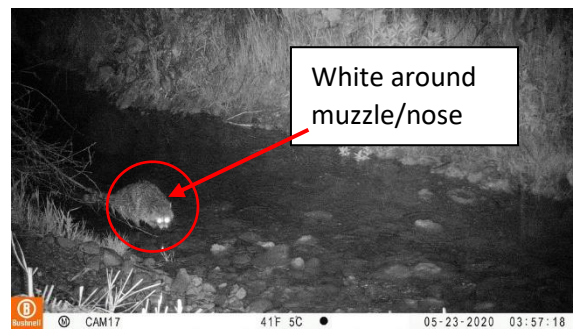
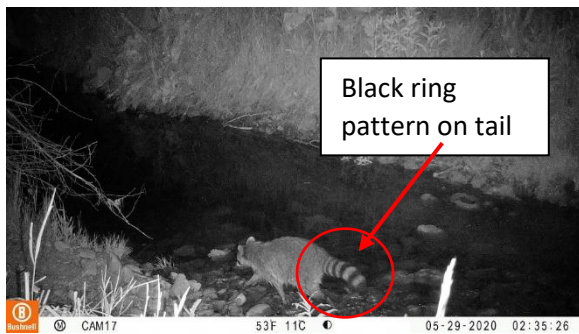
- Long/tall skinny ears extending above top of head
- Dark eyes and large head
- Long bushy tail
- Long and stout neck
- Light brown and black coloring



Northern Raccoon

Defining characteristics:

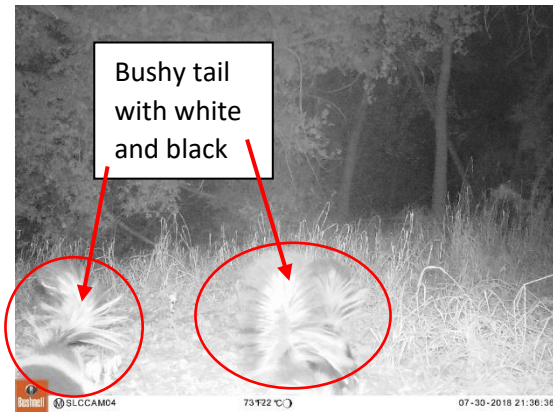
- Grey/brown fur
- Black mask over eyes with white fur surrounding the mask on nose and eyebrows
- Long whiskers
- Bushy tail with black ring pattern
- Black paws



Striped Skunk

Defining characteristics:

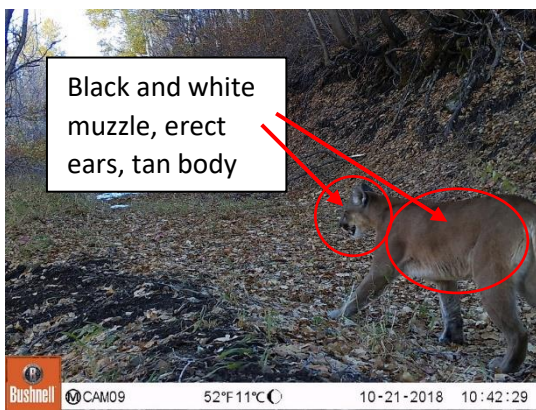
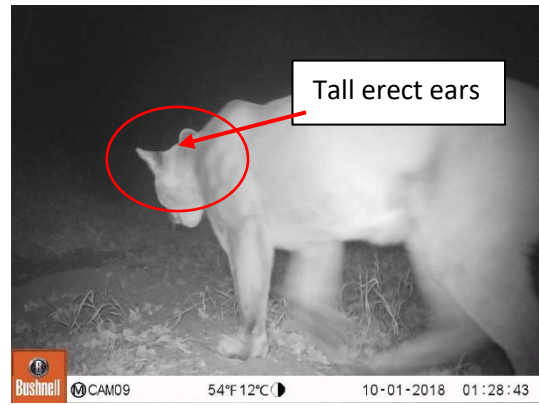
- Black furry coat with two thick white stripes down back continuing onto tail
- Thin white stripe down face from forehead to nose
- Long nose
- Bushy tail



Puma

Defining characteristics:

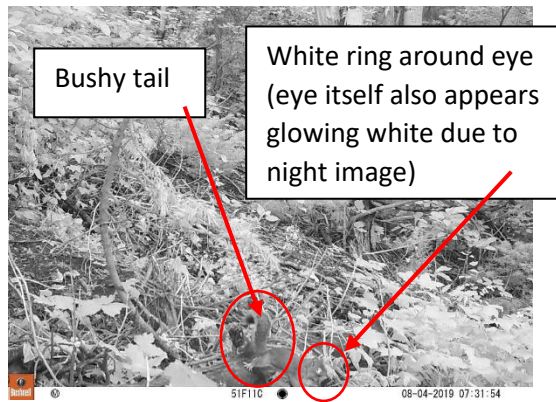
- Tan or lightly yellow coat with thick short fur
- Long tail
- Tall/long ears standing erect
- Yellow eyes with long facial whiskers and white fur around mouth
- Partially black muzzle around white fur on mouth



Red Squirrel

Defining characteristics:

- White ring around eyes
- Dark red bushy tail with hints of white
- White belly with rust colored/grey/red body fur
- Small, round, erect ears



Fox Squirrel

Defining characteristics:

- Long furry tail
- Varying fur and feet color combination, most commonly seen with red-ish brown feet
- “Frosted look” on fur with red-ish brown tips





Red Fox

Defining characteristics:

- Long snout
- Red fur along body, tail, and face with white fur under muzzle, chin, and neck
- Tall pointy ears with black tips
- Black feet
- White tipped tail

